

Maintenance recommendations after use (every time)

Wear full protective gear during maintenance!
Always act according to the safety instructions as supplied with the PowerShore !

- Necessary equipment: soft cloth (also check list page 9).



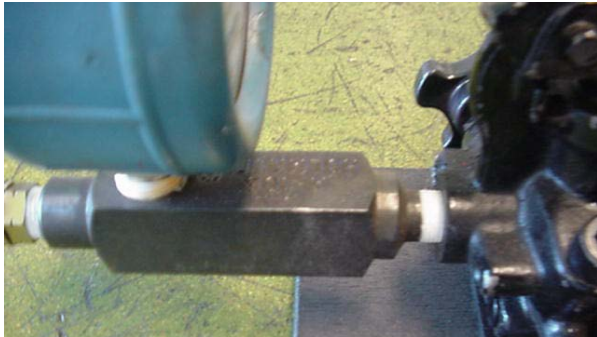
Step 1

- Check general condition pump.



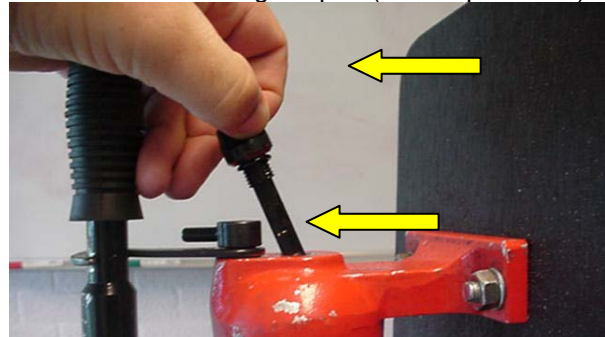
Step 2

- Check coupler for dirt and/or oil leakage.
- Clean coupler with a clean and soft cloth, if necessary with water and soap.
- If necessary grease with hydraulic oil or use WD-40.
- Check functioning coupler (see step 24 – 25)



Step 3

- Check for traces of oil leakage.



Step 4

- Check the oil level, which should be between the minimum and maximum line on the dipstick.



Step 5

- Refill pump with mineral hydraulic oil.



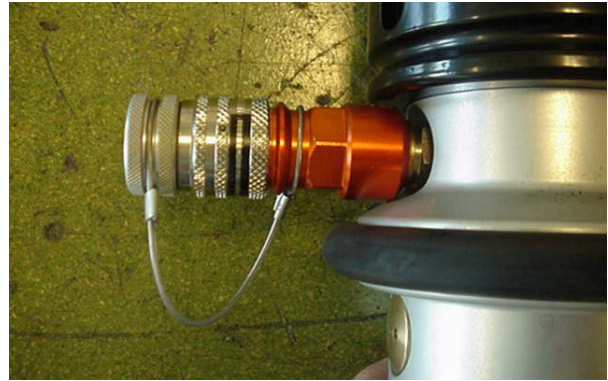
Step 6

- Storage: Return the pump handle to its horizontal position and lock with hook.
- Pump can be stored horizontally and vertically with couplers facing downwards.



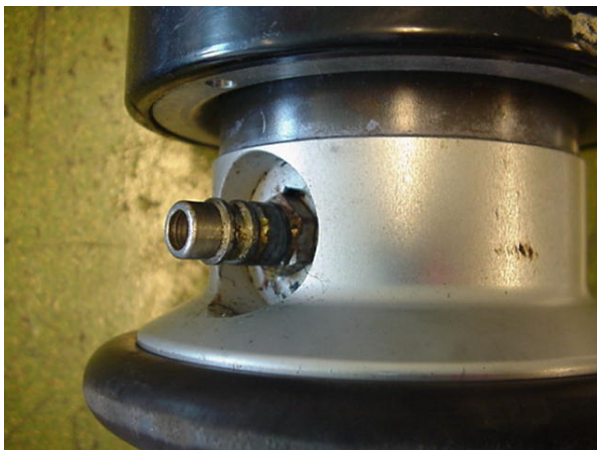
Step 7

- Check general condition hydraulic strut.



Step 8 (Hydraulic strut)

- Check coupler for oil leakage.
- Clean coupler with a clean and soft cloth, if necessary with water and soap.
- If necessary grease with hydraulic oil or use WD-40.
- Check functioning of the coupler (see page 9).



Step 8 (Pneumatic struts)

- Clean coupler with a clean and soft cloth, if necessary with water and soap.
- Check functioning coupler.



Step 9

- Clean the thread or grooves of the strut with a soft cloth.
- If necessary spray a little AF coating (MoS2) onto the thread.



Step 10

- Clean the quick lock mechanism of the strut and extension pipes.



Step 11

- Clean the male part of the extension pipes and accessories.